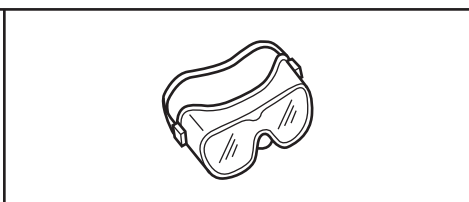
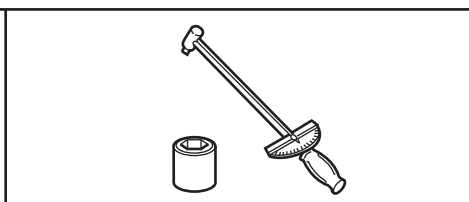
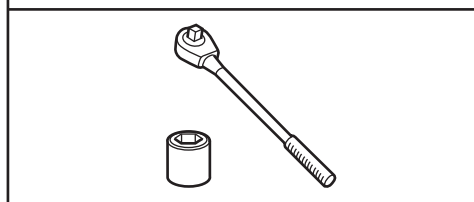
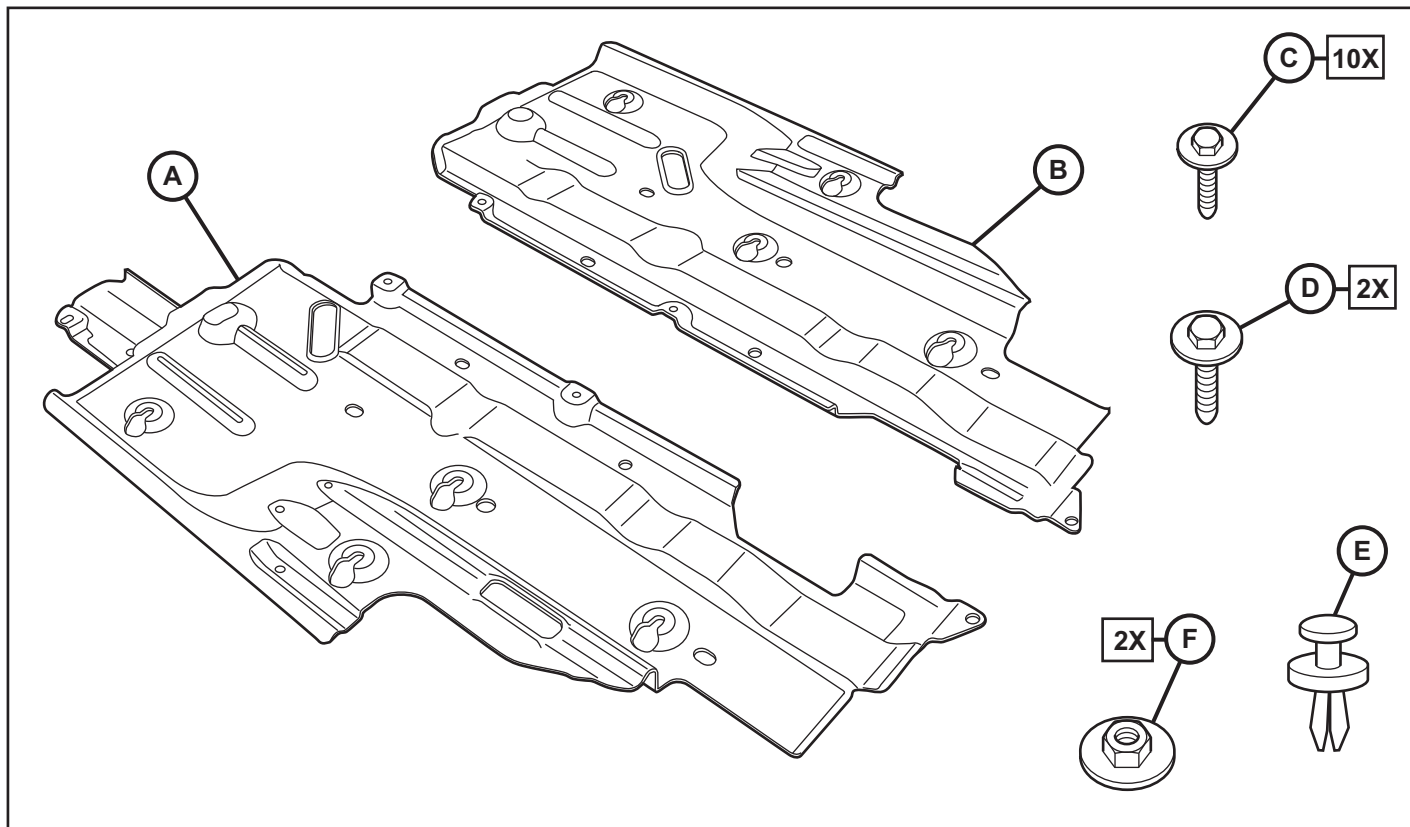


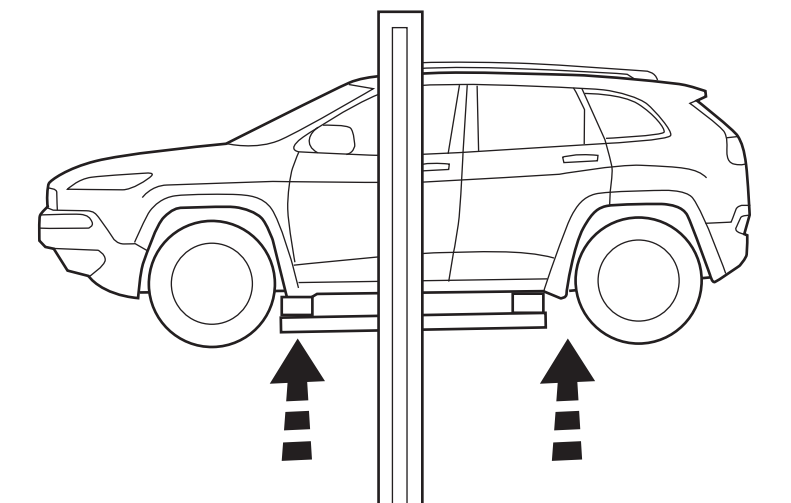


UNDERBODY SKID PLATES

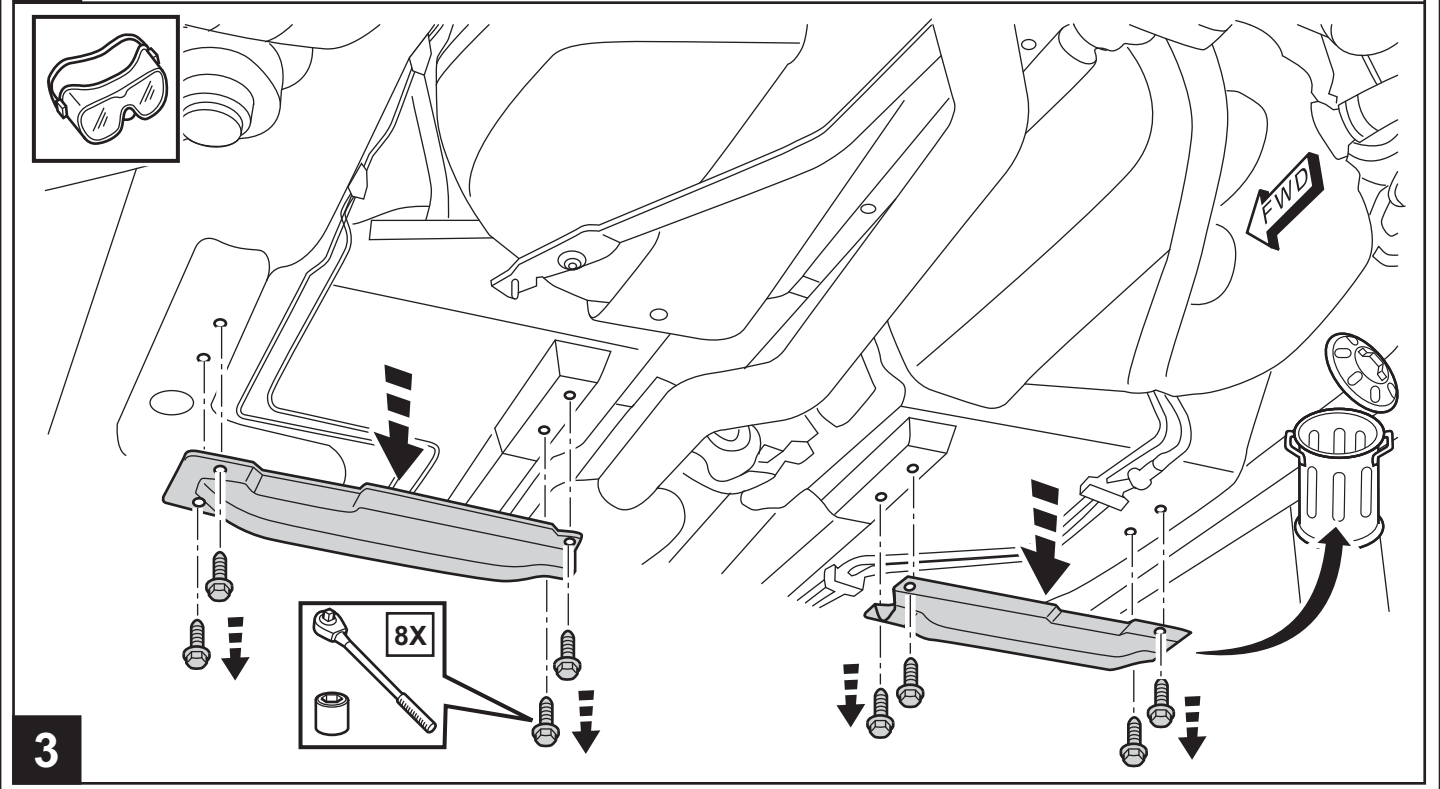
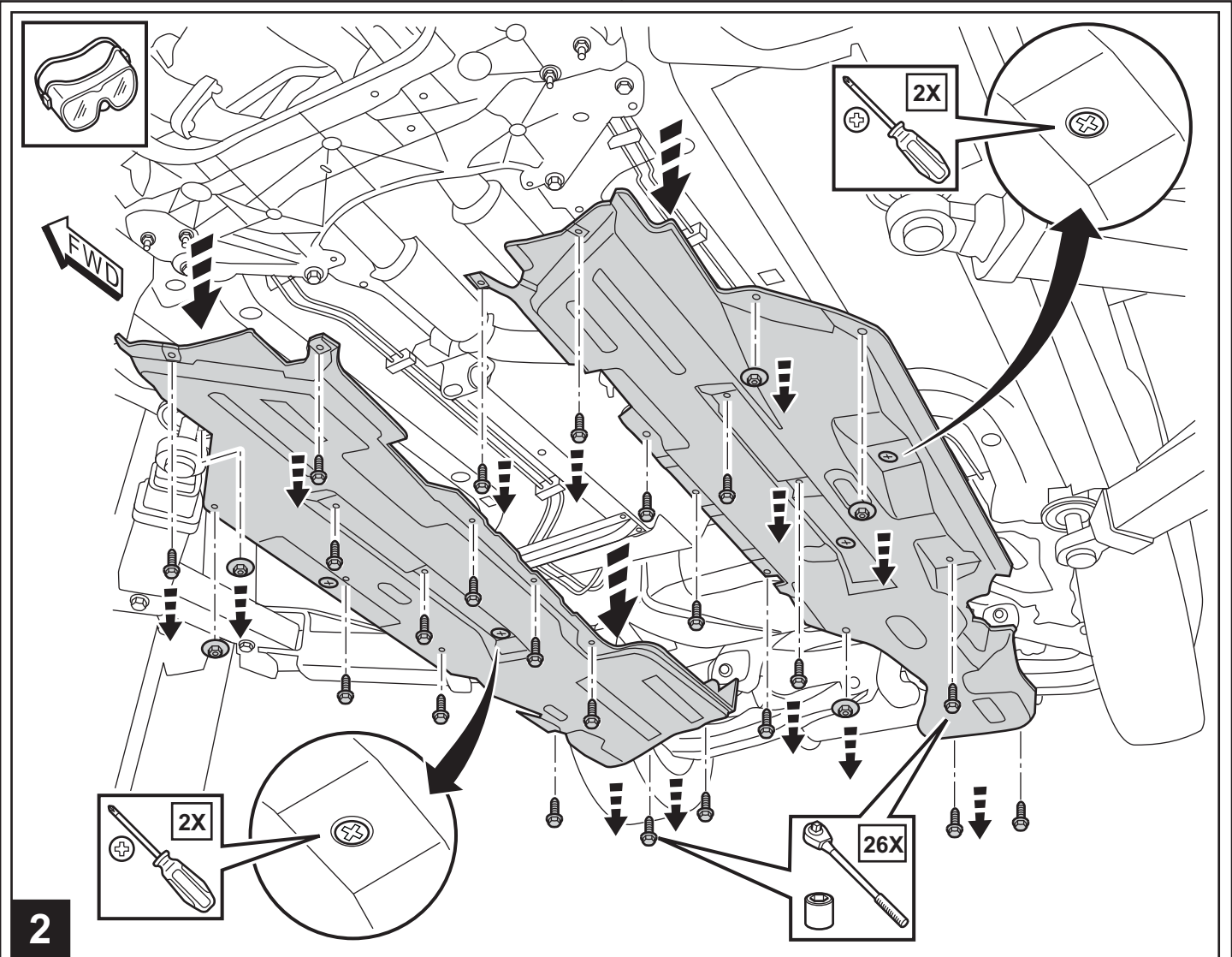
www.mopar.com

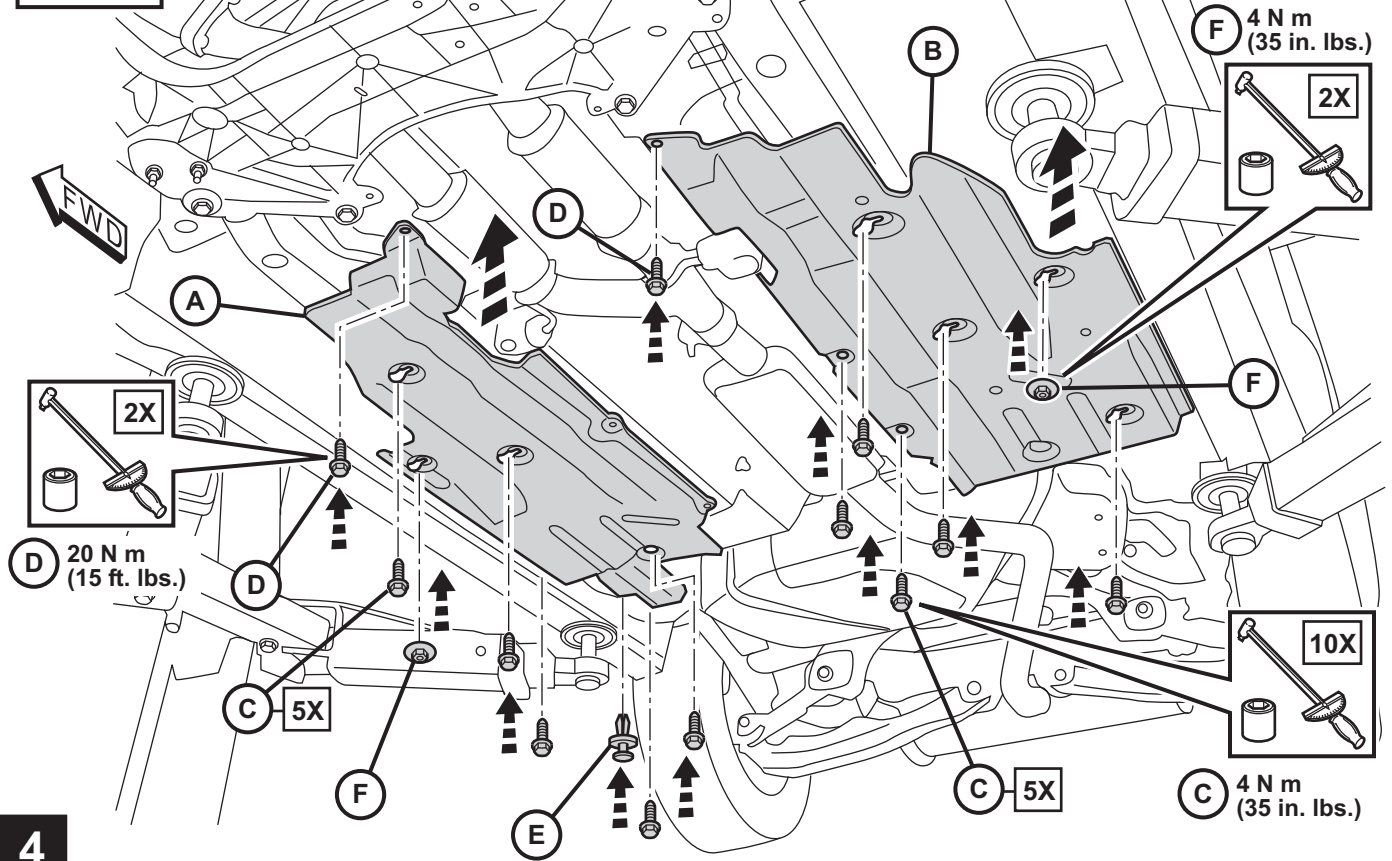


RETAIN ALL FASTENERS FOR REINSTALLATION



1



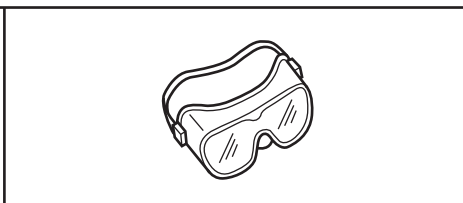
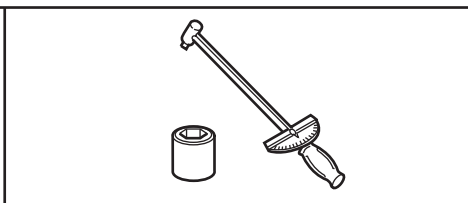
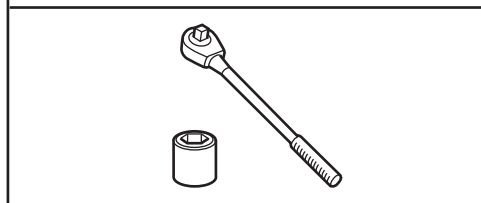
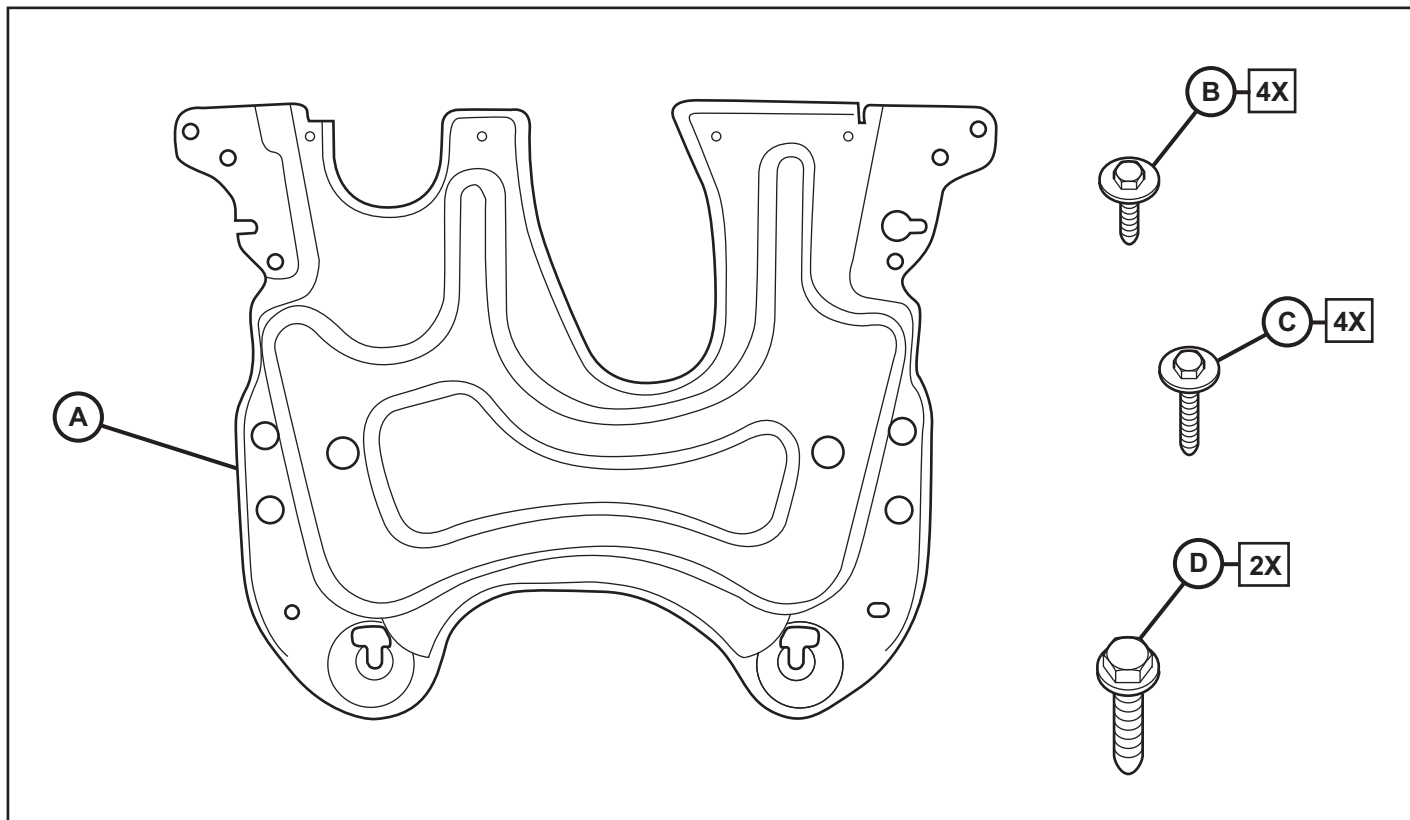


4

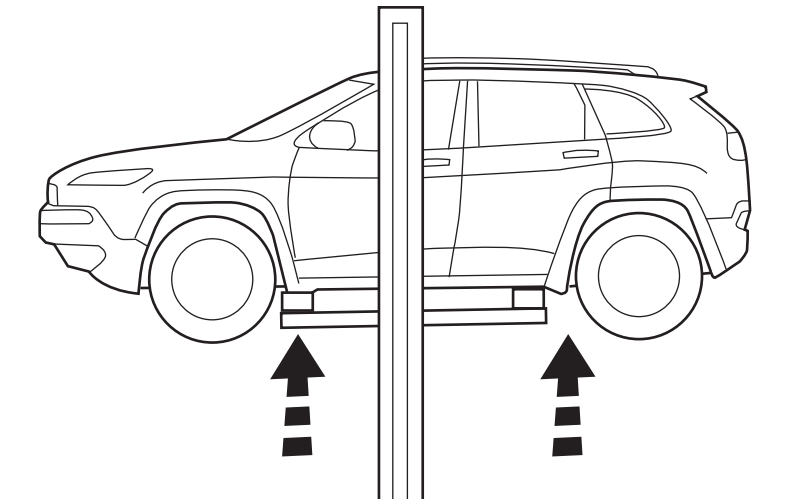


FRONT SUSPENSION SKID PLATE

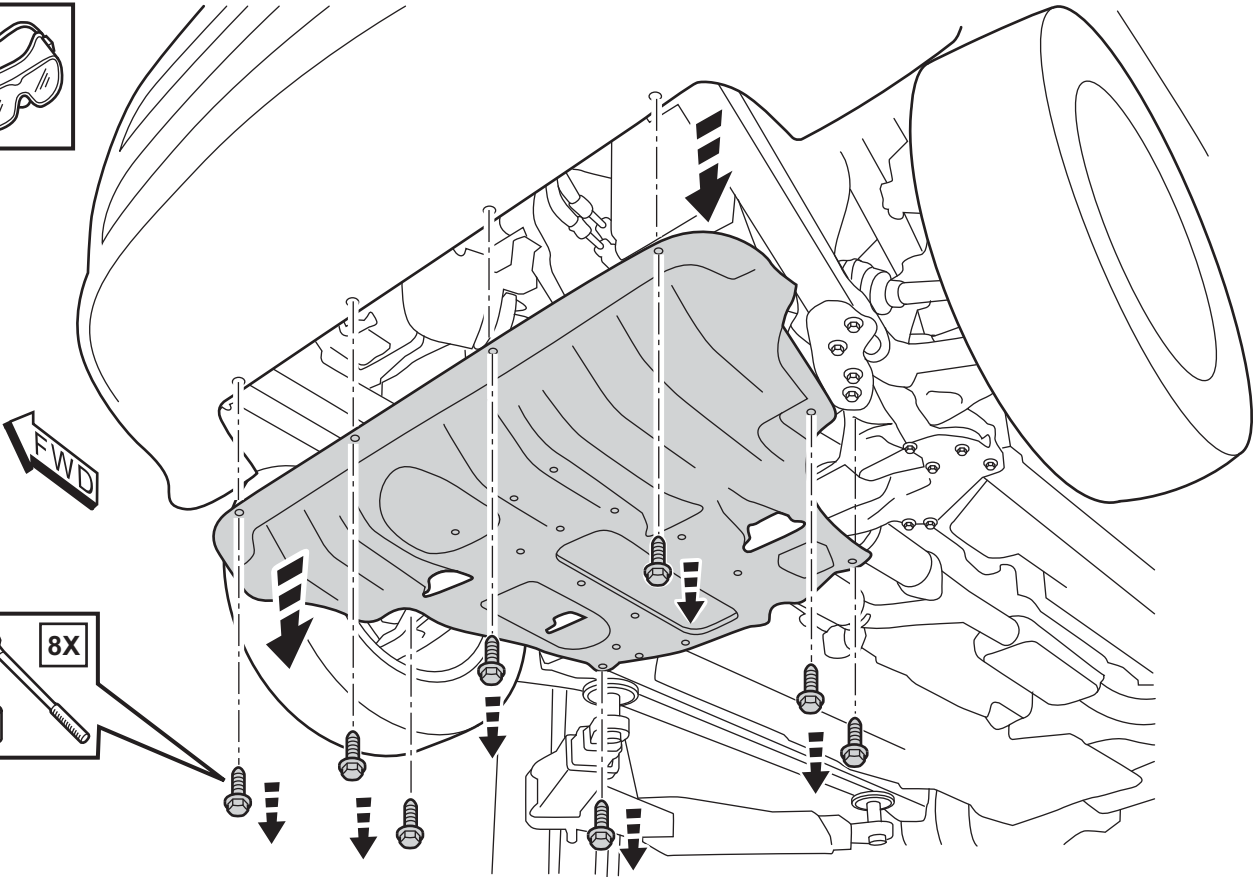
www.mopar.com



RETAIN ALL FASTENERS FOR REINSTALLATION

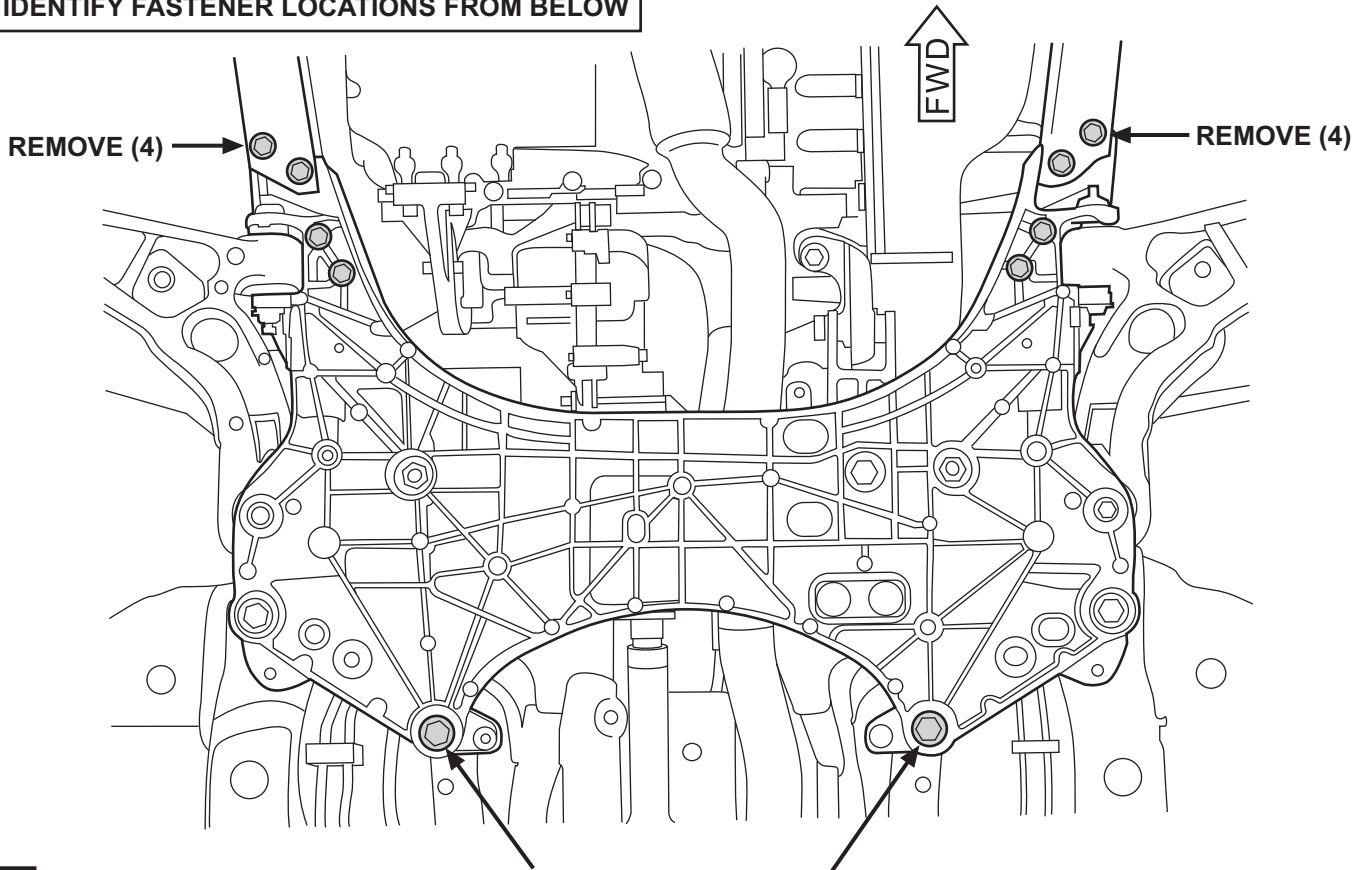


1



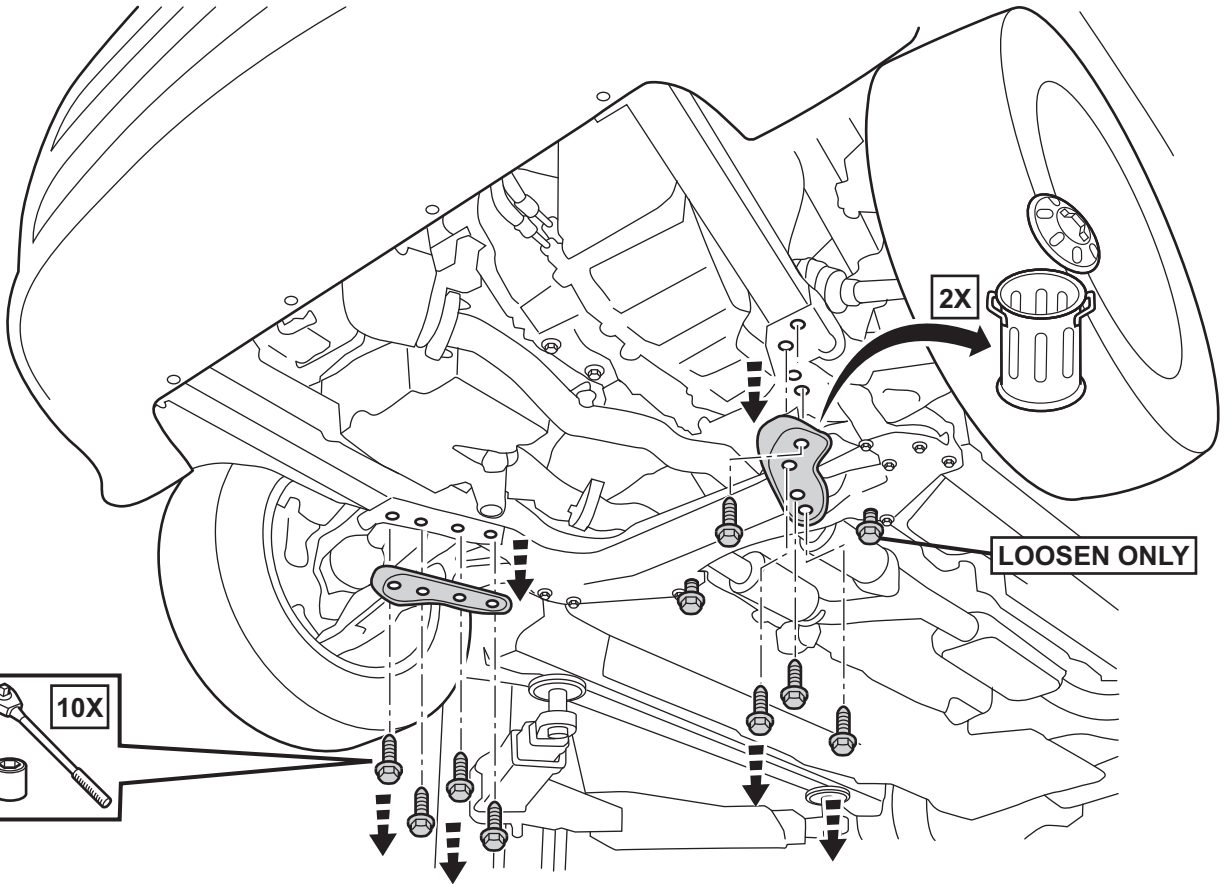
2

IDENTIFY FASTENER LOCATIONS FROM BELOW

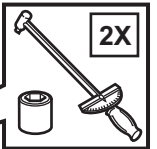
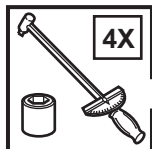


3

LOOSEN (2) AT BACK, BUT DO NOT REMOVE

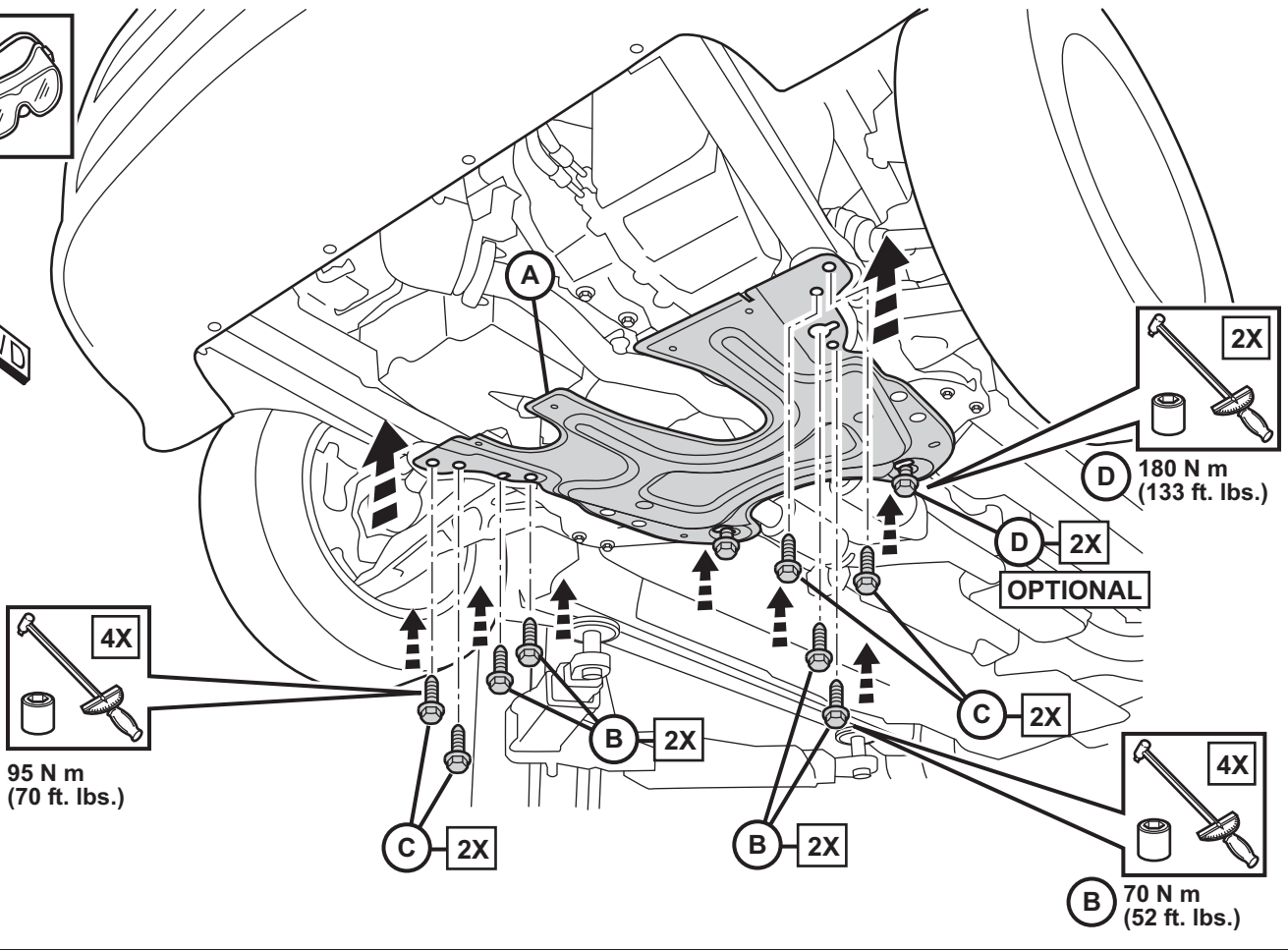


4



C 95 N m (70 ft. lbs.)

D 180 N m (133 ft. lbs.)



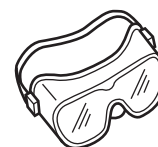
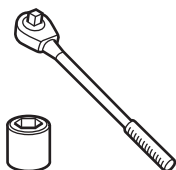
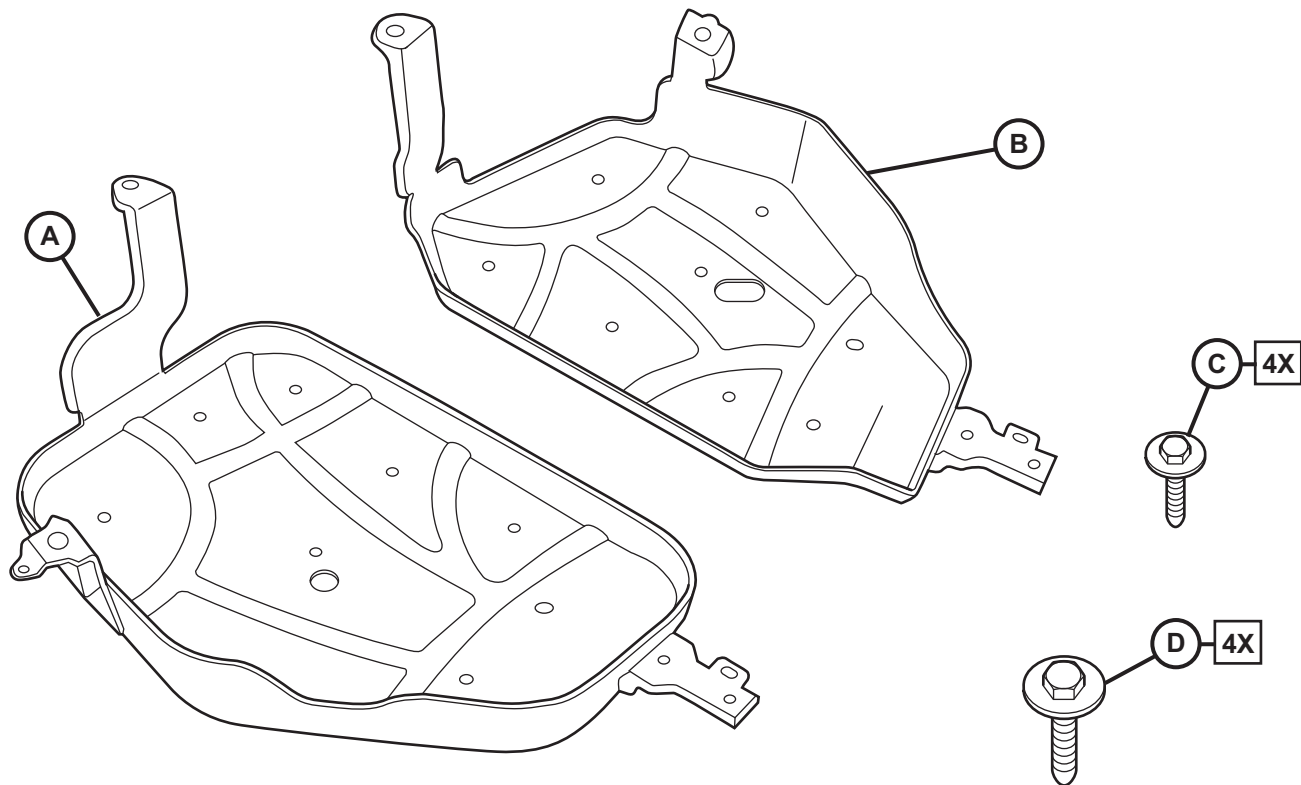
OPTIONAL

B 70 N m (52 ft. lbs.)

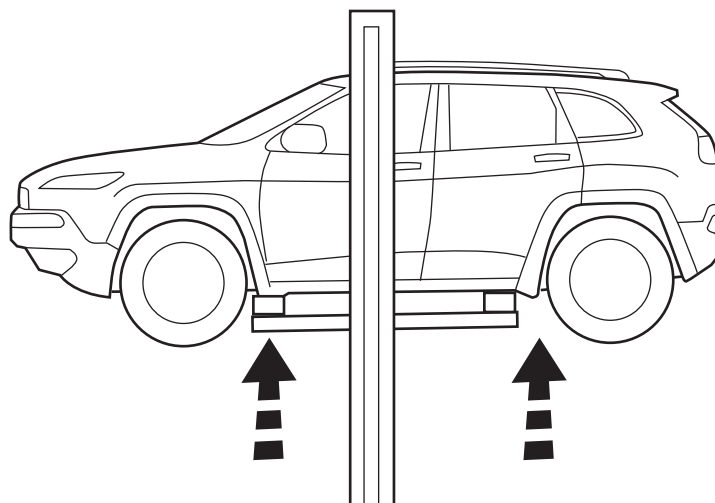


FUEL TANK SKID PLATES

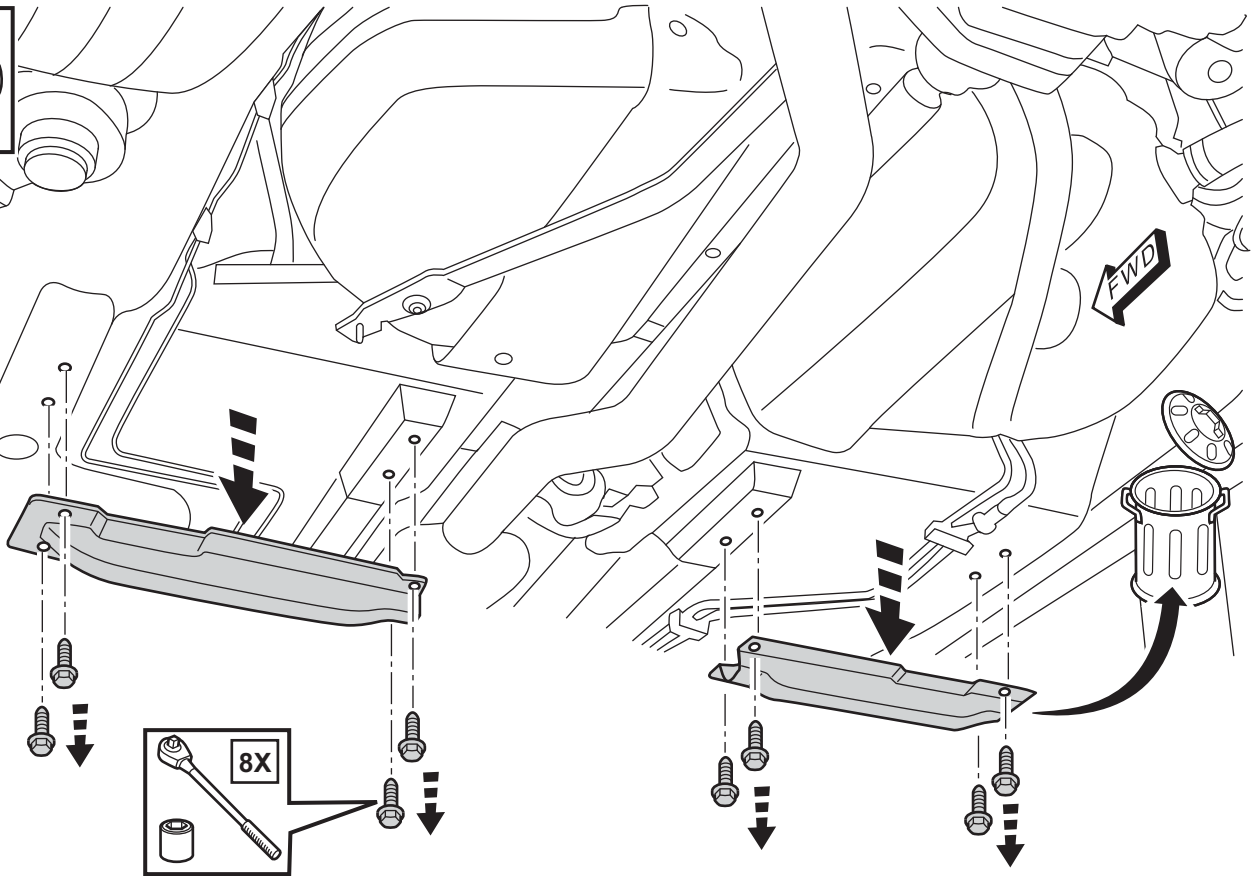
www.mopar.com



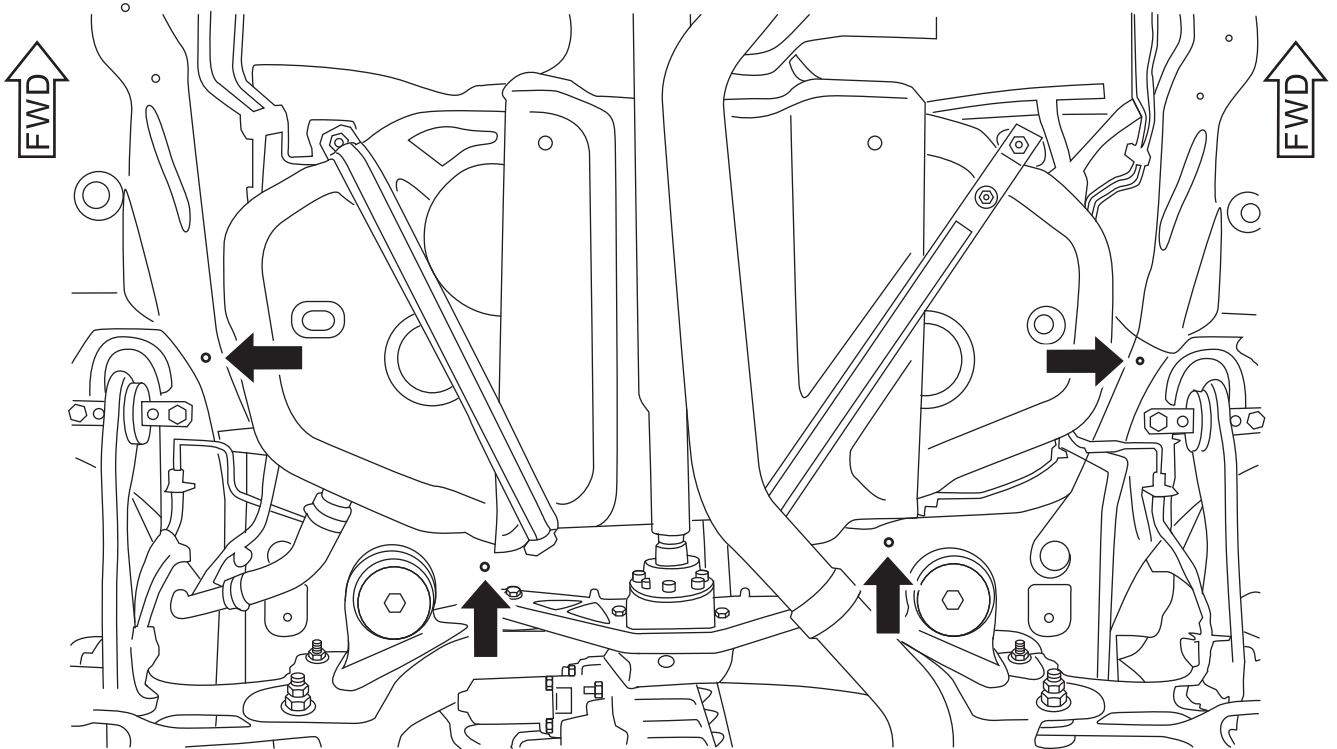
RETAIN ALL FASTENERS FOR REINSTALLATION



1

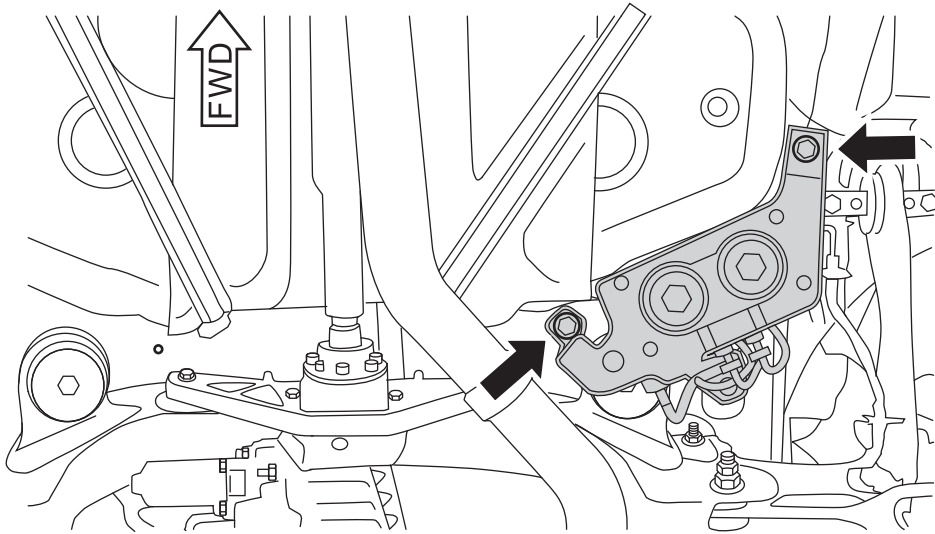


2



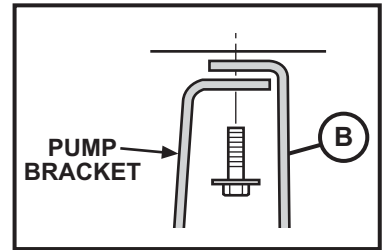
LOCATE MOUNTING HOLES

3

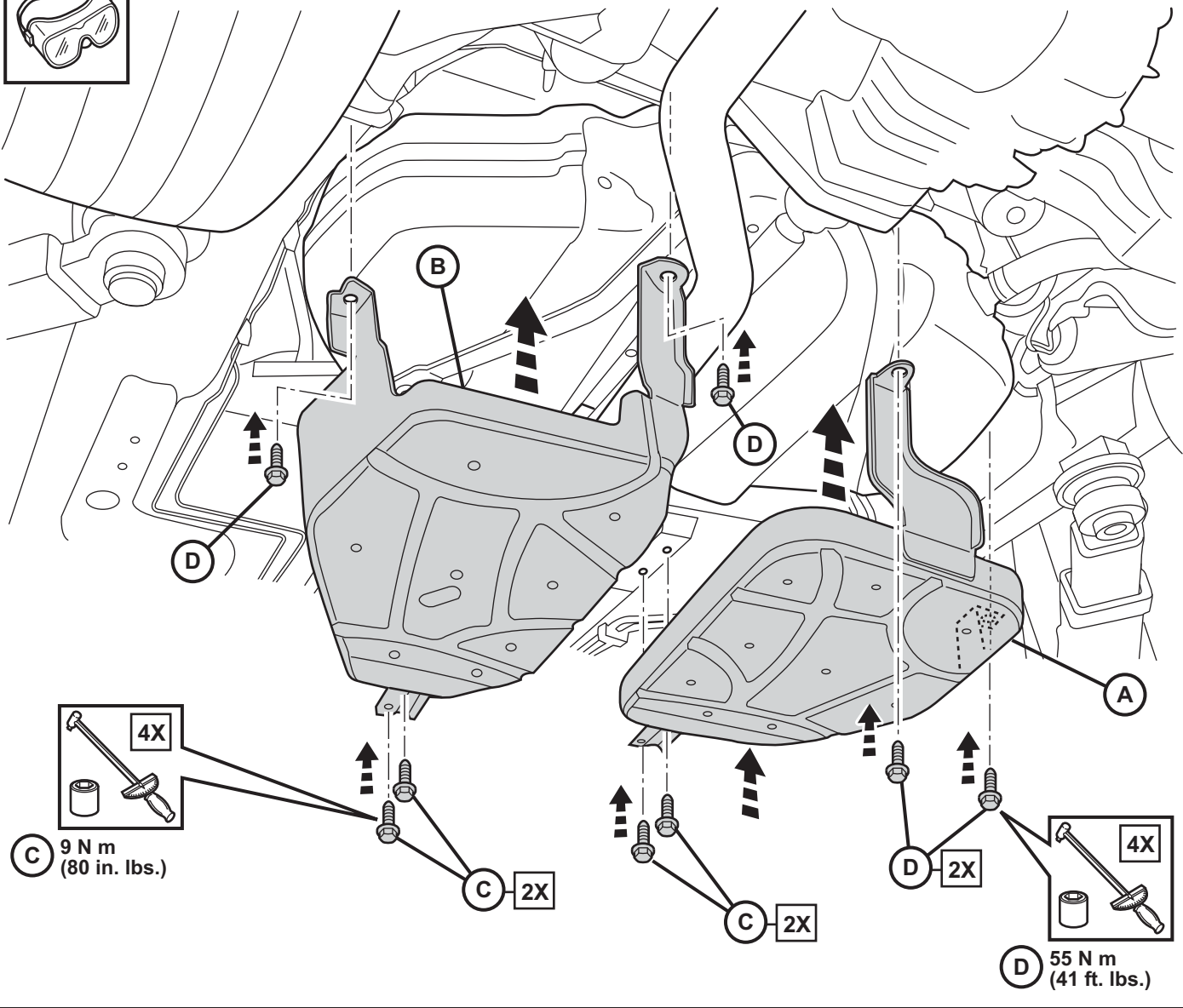


DIESEL VEHICLES ONLY

LOCATE REAR DRIVER SIDE PUMP AND USE EXISTING BRACKET FASTENERS TO ATTACH SKID PLATE.



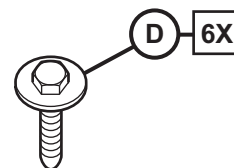
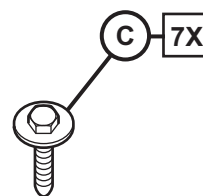
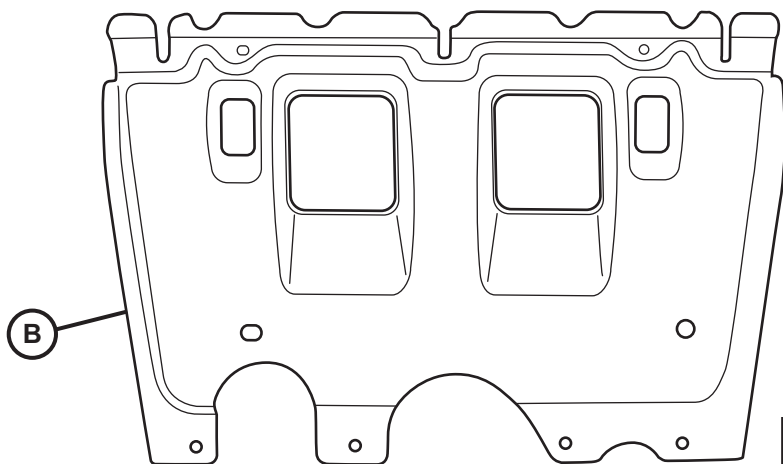
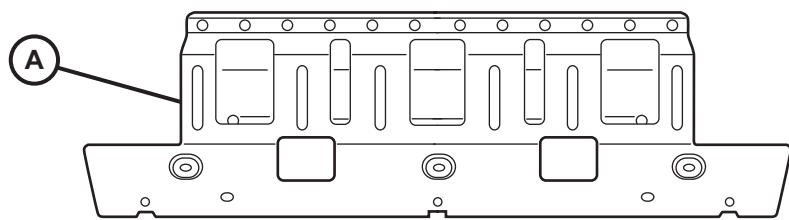
4



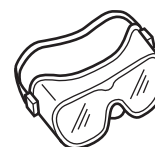
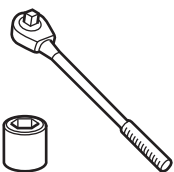


OIL PAN SKID PLATE

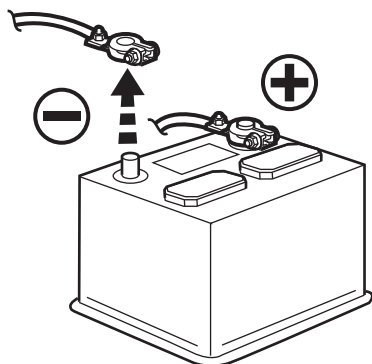
www.mopar.com



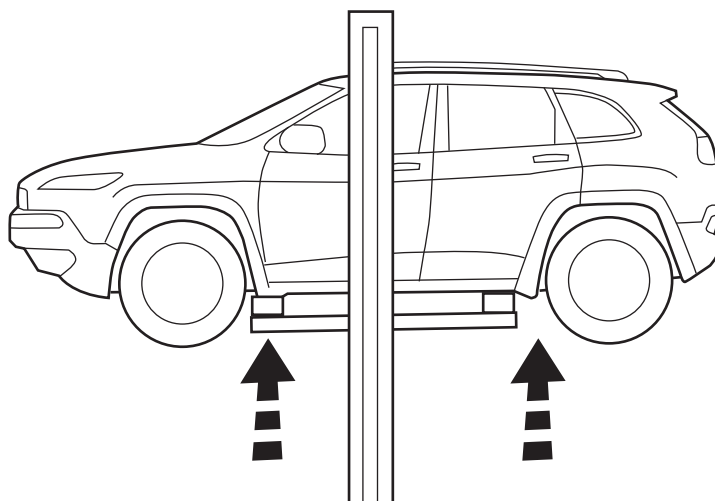
NOTE: FRONT SUSPENSION SKID PLATE MUST BE PRESENT ON VEHICLE FOR THIS INSTALLATION



RETAIN ALL FASTENERS FOR REINSTALLATION



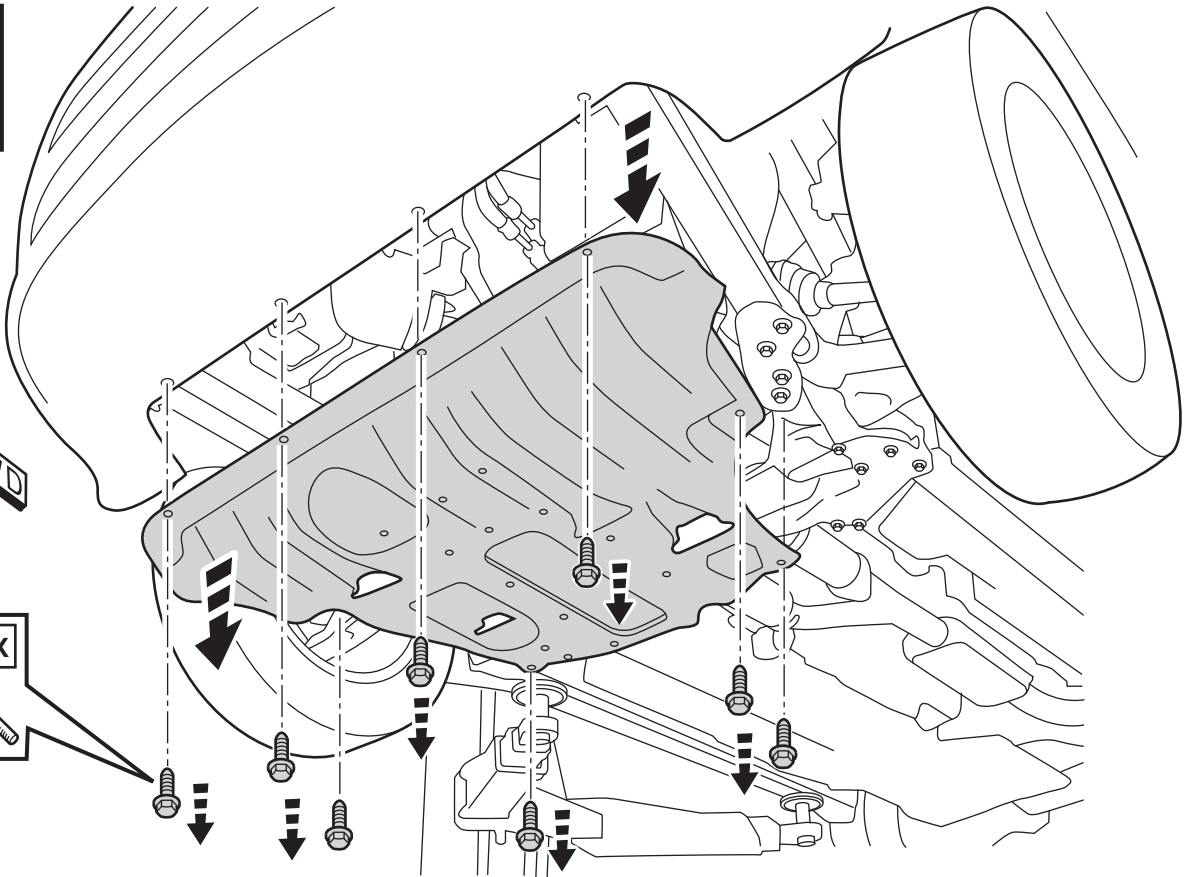
1



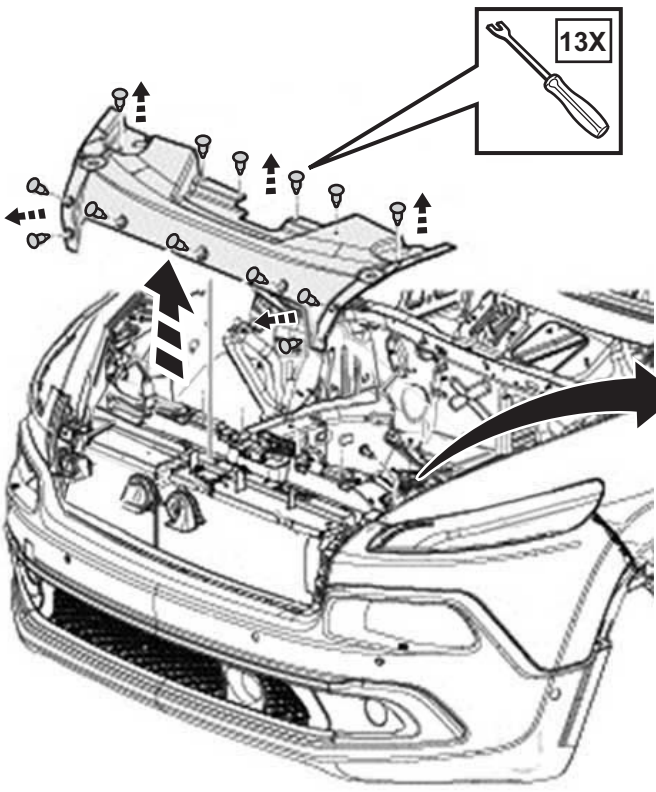
2



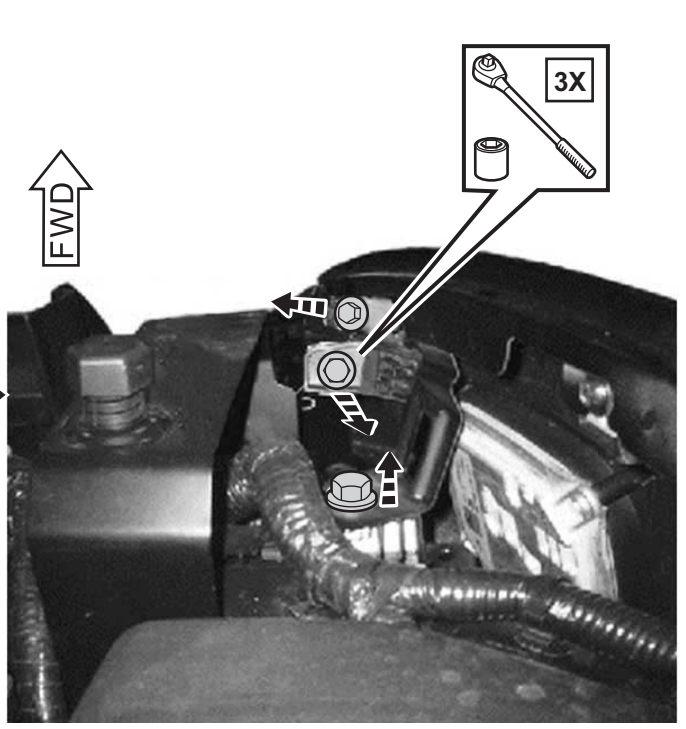
FWD



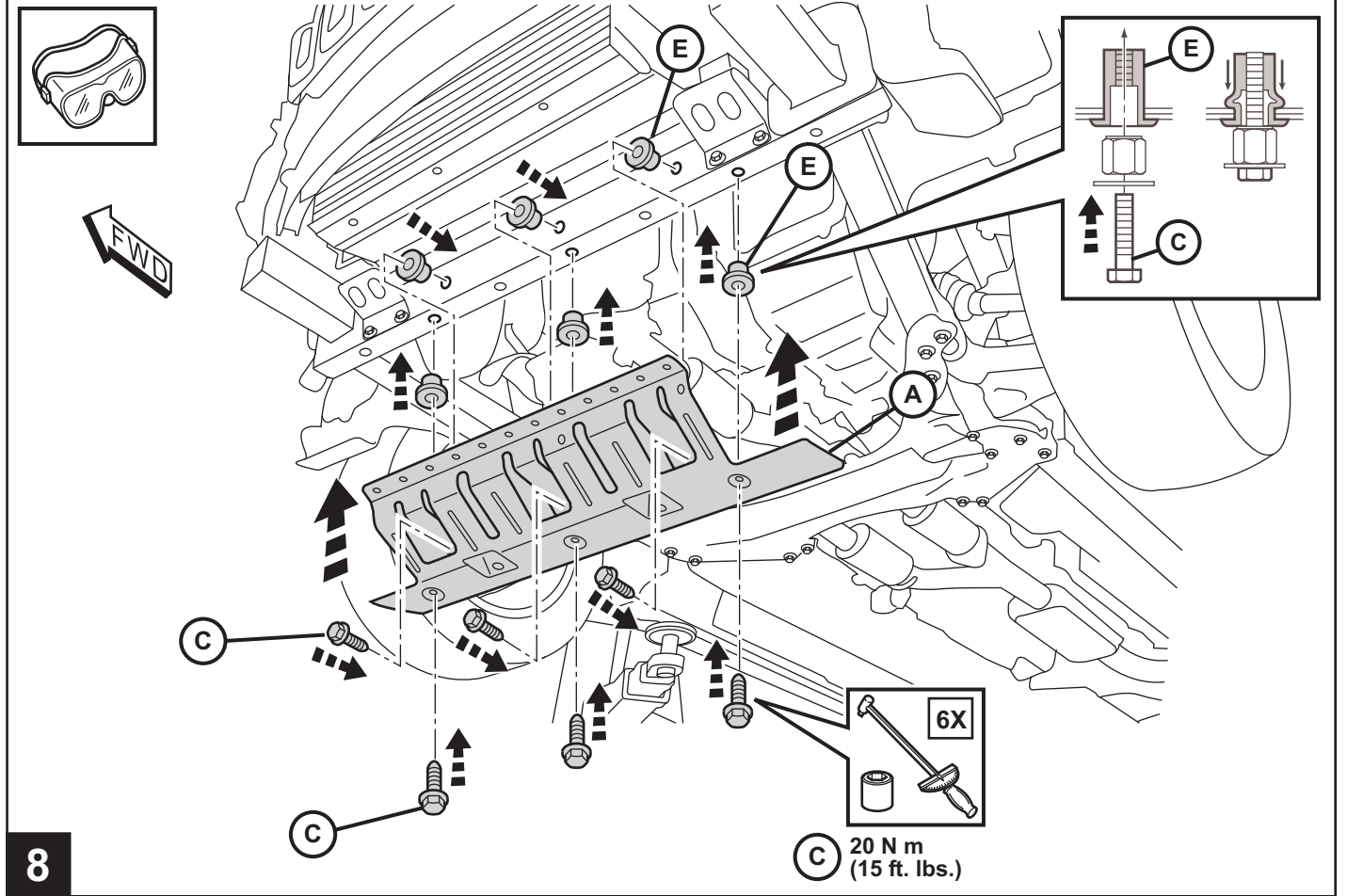
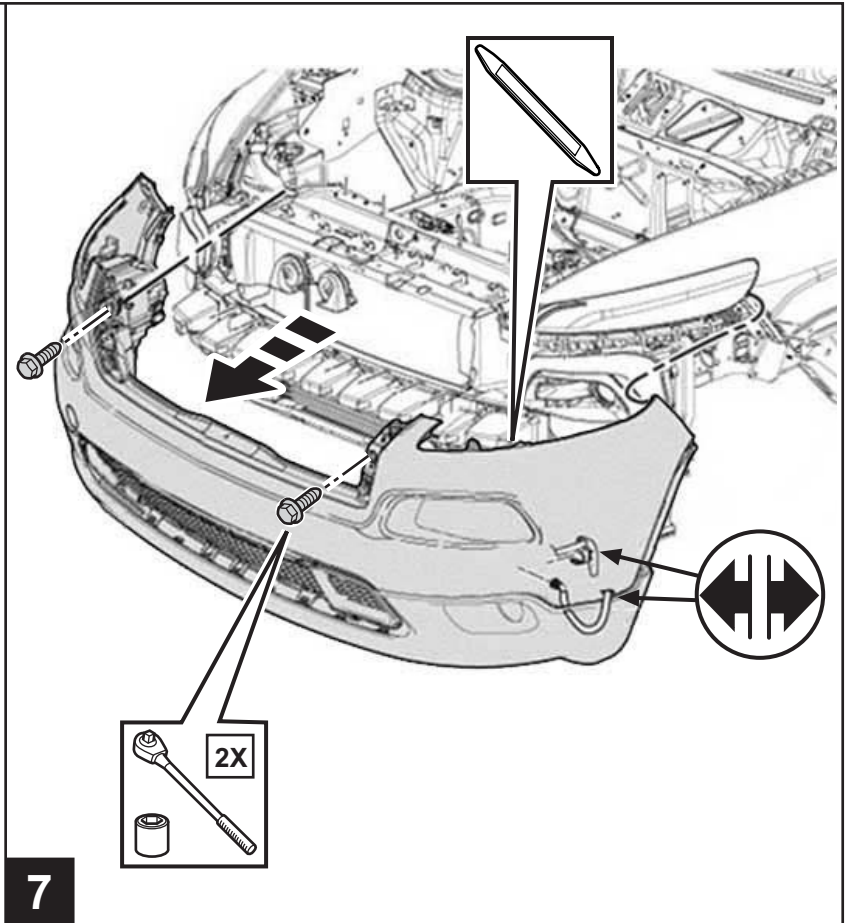
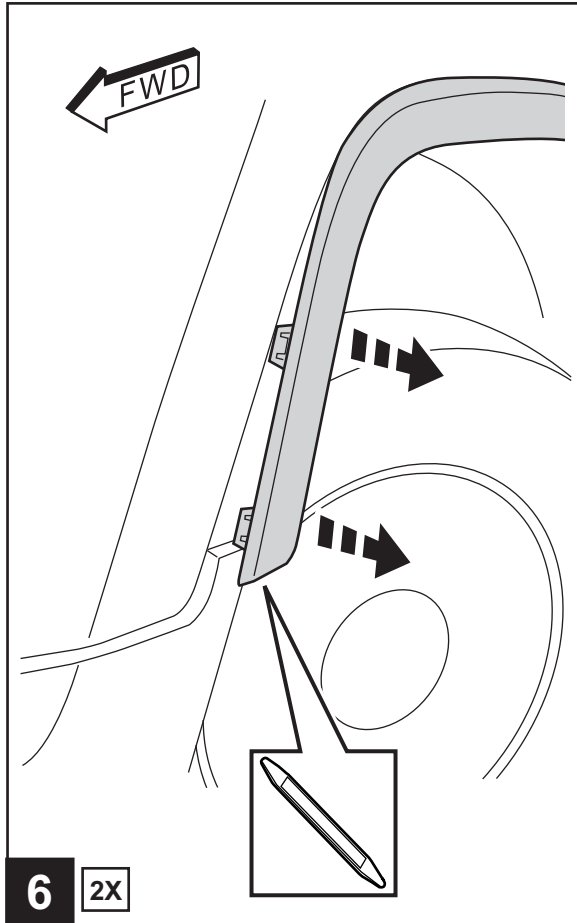
3



4

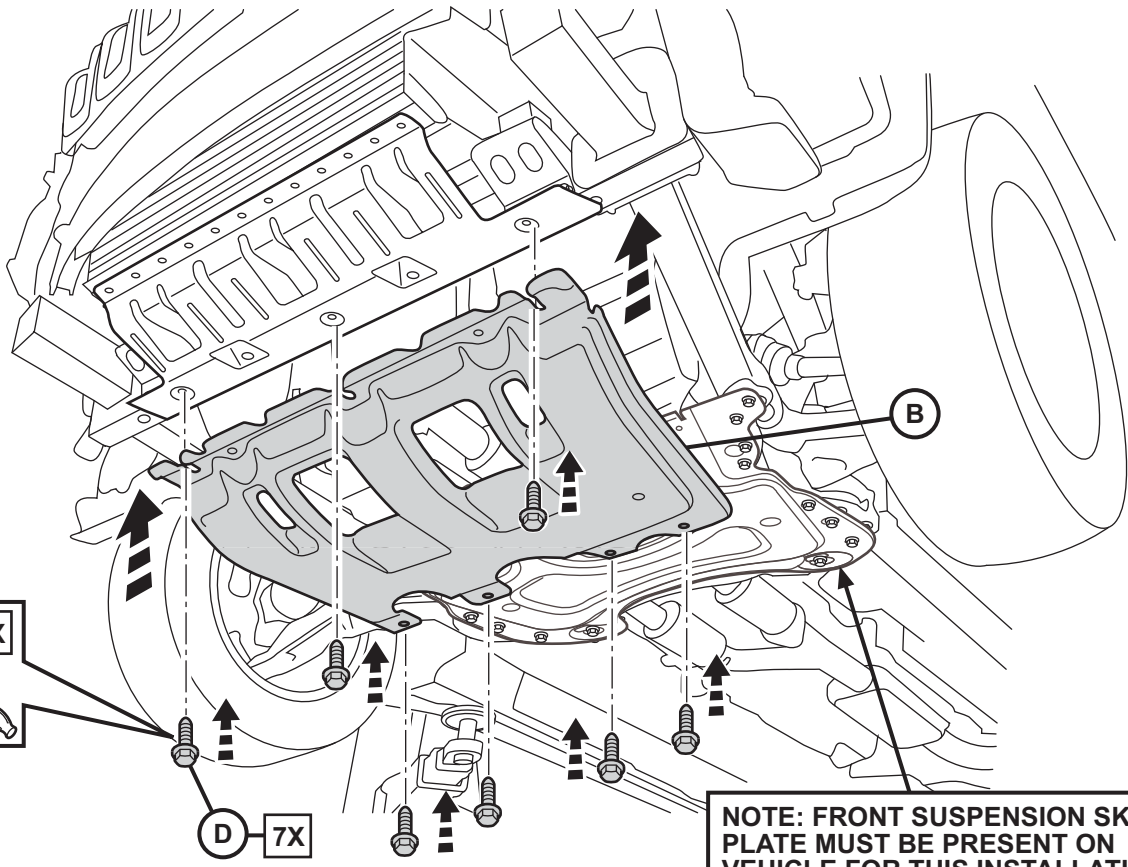


5 2X





20 N m
(15 ft. lbs.)



NOTE: FRONT SUSPENSION SKID PLATE MUST BE PRESENT ON VEHICLE FOR THIS INSTALLATION

9

REVERSE STEPS 1 THROUGH 7 TO REINSTALL ALL BODY PANELS AND COMPONENTS.

10