

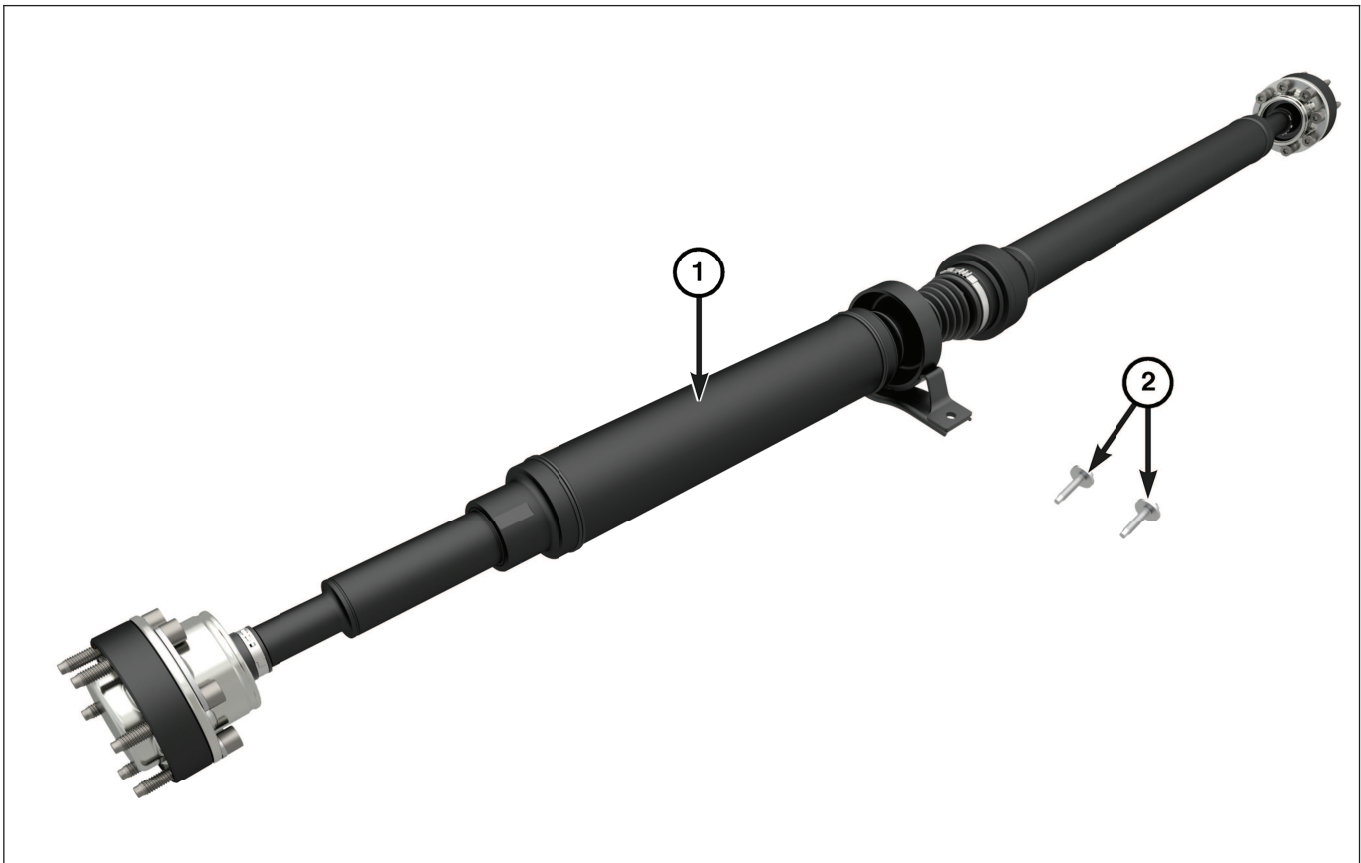


Direct Connection Performance Part

REDEYE DRIVESHAFT PACKAGE

PART NUMBER: 77072536AB

2015+ CHALLENGER HELLCAT (6.2L)



Item	Description	Part Number	Quantity
1	Driveshaft	53010846AB	1
2	Center Bearing Bolts	06101839	2

NOTE: Some items may be shipped with more than the quantity needed to perform the procedure.

PLEASE READ ALL INSTRUCTION PRIOR TO INSTALLATION.

FOR ASSISTANCE CONTACT DIRECT CONNECTION TECH HOTLINE 1-800-998-1110

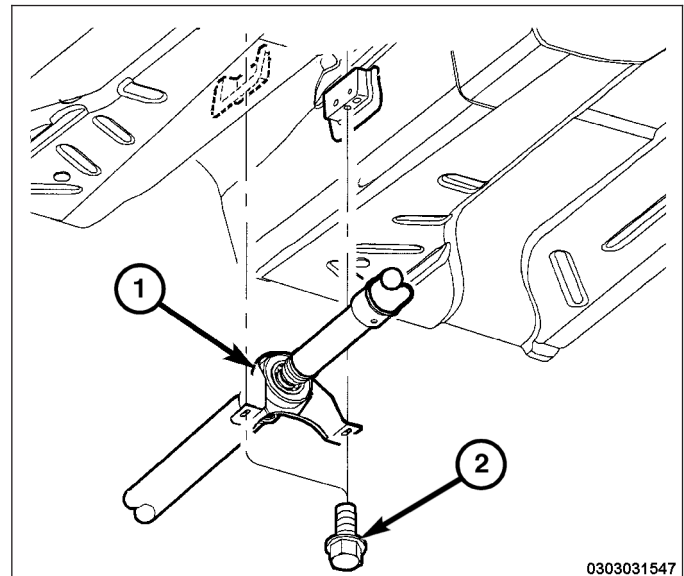
DRIVESHAFT REMOVAL

CAUTION! Driveshaft removal is a two-person operation. Never allow the driveshaft to hang from the center bearing, or while only connected to the transmission or differential flanges. An assistant is required. If a driveshaft section is hung unsupported, damage may occur to the shaft, joint and center bearing from over-angulation. This may result in driveline vibrations or component failure.

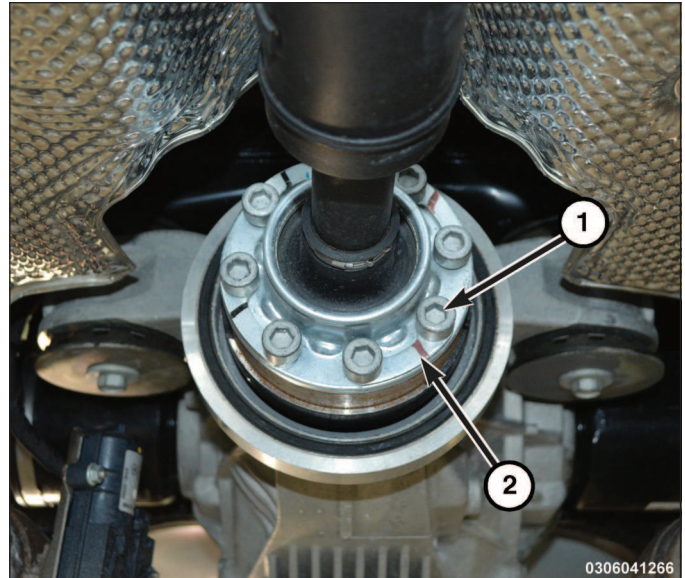
NOTE: During driveshaft removal or installation avoid any contact with the front and rear joint grease caps. Any damage to the grease cap caused by improper handling during installation or removal could cause a grease leak and subsequent damage to the CV joint. Do not pull on the shaft in order to remove the front joint from the transmission/transfer case flange, this could dent or dislodge the boot and cause a grease leak and subsequent joint failure.

NOTE: The use of soft blunt tools is recommended for removal of the joints from companion flanges. Use of sharp pry tools, such as a screwdriver, will damage the joint housing and could result in driveline imbalance.

1. Raise and support the vehicle.
2. Remove the rear exhaust system.
3. Remove the heat shield nuts and the heat shield.
4. Remove and discard the driveshaft to transmission flange bolts and washers.
5. Remove the center bearing bracket (1) bolts (2).



6. Remove and discard the driveshaft to differential flange bolts (1) and washers (2).



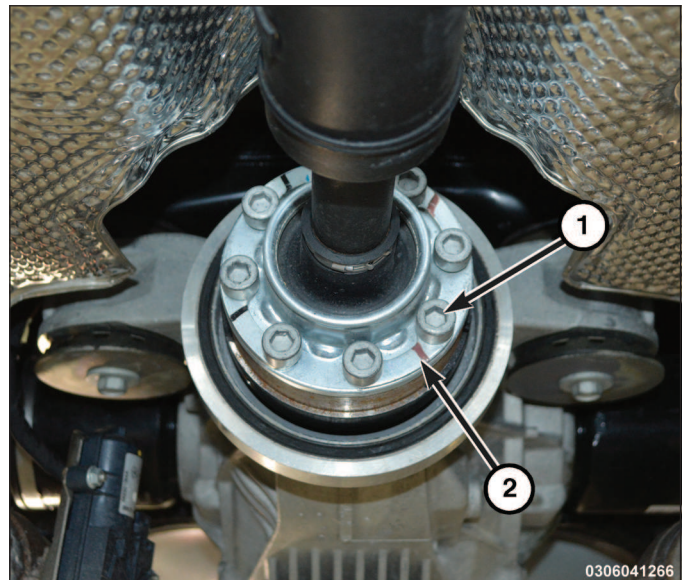
7. With the aid of an assistant, remove the driveshaft assembly.

DRIVESHAFT INSTALLATION

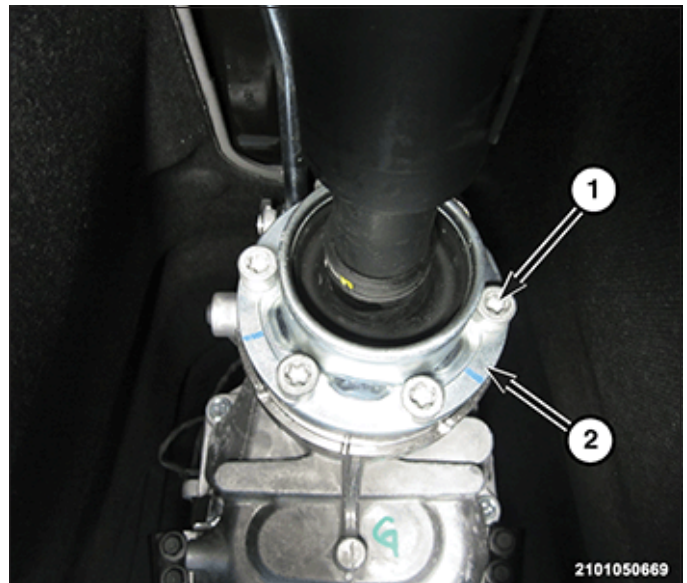
1. With the aid of an assistant, install the driveshaft into position at the differential flange.

NOTE: When installing the new driveshaft use the new hardware already included in the driveshaft.

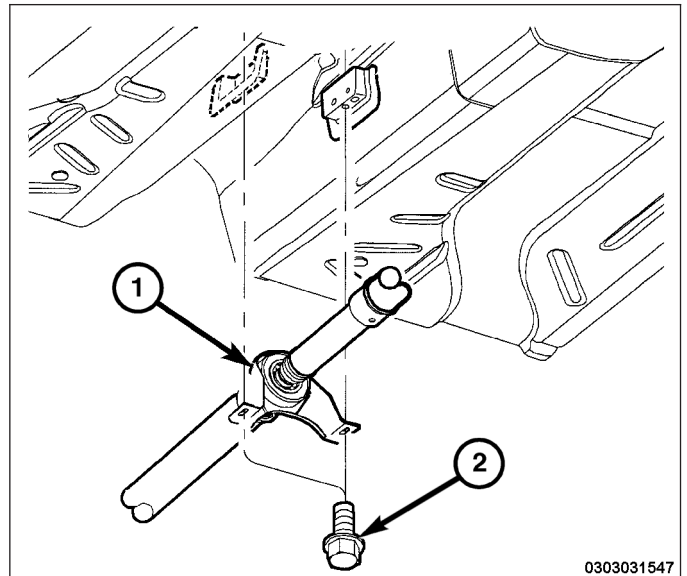
2. Install the **NEW** driveshaft to differential flange washers (2) and bolts (1) by hand. **Do not tighten at this time.** If yellow index mark exists on rear axle, align yellow dot on driveshaft with yellow index mark on differential flange before install. If yellow dot does not exist, proceed with driveshaft install and road test and evaluate for vibration or noise. Reapply Mopar lock and seal adhesive or equivalent if driveshaft fasteners are to be reinstalled.



3. Install driveshaft into position at the transmission flange. Install the **NEW** driveshaft to transmission flange washers (2) and driveshaft bolts (1) by hand. **Do not tighten at this time.**

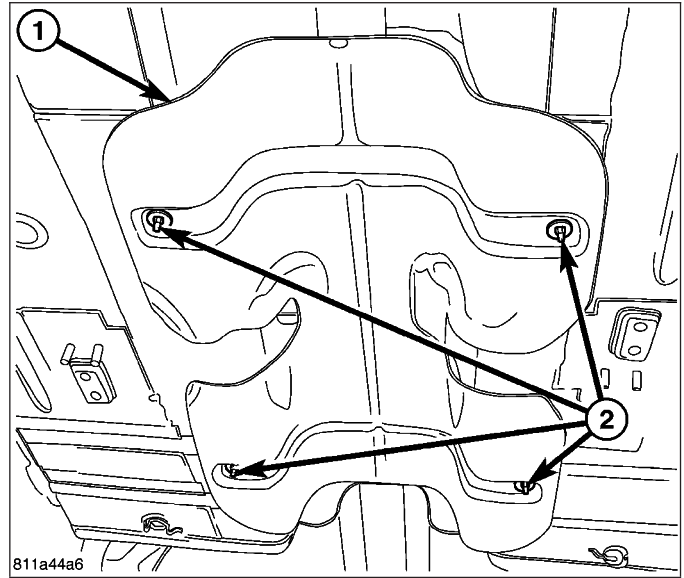


4. Position the center bearing (1) in place and loosely install the center bearing to body bolts (2) by hand. **Do not tighten at this time.**



5. Torque the driveshaft to transmission flange bolts in a star pattern to **66 N·m (49 Ft. Lbs.)**
6. Torque the driveshaft to rear differential flange bolts in a star pattern to **66 N·m (49 Ft. Lbs.)**
7. Torque the center bearing to body bolts to **28 N·m (21 Ft. Lbs.)**

8. Install the heat shield (1) and the heat shield nuts (2). Torque the nuts to **6 N·m (53 In. Lbs.)**.



9. Install the rear exhaust system.